

AMENITIES



Children Play Area



Club House



Jogging Track



Landscape Garden



Special Area For Senior Citizens



Community Hall



Party Lawn



Guest Waiting Lobby



Swimming Pool



Skating Area



Well-equipped Gymnasium



Yoga And Meditation Area



Well Equipped Indoor Play Area



Half Basketball Court



Multipurpose Open Court



Well Equipped Fire Protection & Fire Alarm System for Common Areas



24x7 CCTV Surveillance In Parking & Common Areas

SPECIFICATIONS

- ◆ AC points in all bedrooms
- ◆ Aluminum powder coated sliding windows with safety grills
- ◆ Anti-Skid flooring in balcony and toilets
- ◆ Concealed plumbing and wiring with quality fittings
- ◆ Dado tiles upto ceiling in all toilets
- ◆ Generator back up for the lighting load all over the flat
- ◆ Intercom facility in each flat
- ◆ Main door with standard latch fittings
- ◆ Mosquito net for all windows and glass doors
- ◆ L Shape kitchen platform with stands
- ◆ Solar hot water for bathing in each toilet
- ◆ SS railing with toughened glass for balcony
- ◆ Telephone points in all bedrooms and living room
- ◆ Total vitrified flooring all over the flat
- ◆ TV points in living room, master bedroom
- ◆ Video Door Phone with bell
- ◆ Wall hung European water closet (commode) in all toilets
- ◆ Fire Fighting System in flat

EDUCATIONAL HUBS

- ◆ Akshara International School
- ◆ Balaji Institutes of Modern Management
- ◆ Blossom Public School
- ◆ Indira Global Business School & College
- ◆ J.S.P.M. Institutes
- ◆ Lotus Business School
- ◆ Dr. D. Y. Patil Institutes of Management
- ◆ Cambridge School

HOSPITALS

- ◆ Aditya Birla Hospital
- ◆ Life Point Hospital
- ◆ Lokmanya Hospital
- ◆ Ojas Multispeciality Hospital
- ◆ Surya Mother & Child Care Hospital

RETAIL

- ◆ Reliance Mart / D-Mart
- ◆ Decathlon
- ◆ Zudio
- ◆ Puma / Adidas Showroom
- ◆ Millennium Mall

HOTELS & RESTAURANTS

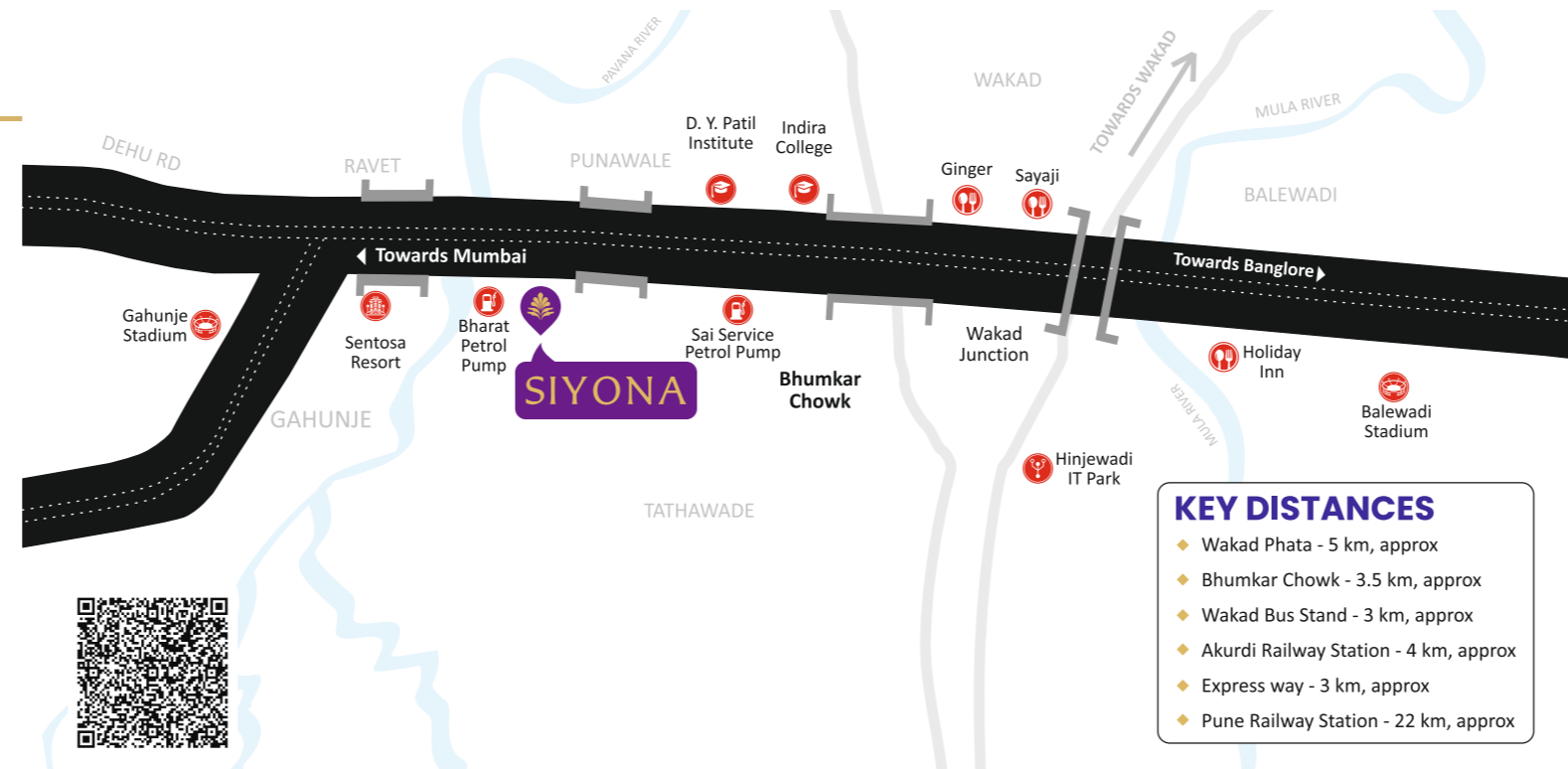
- ◆ Domino's Pizza
- ◆ Ginger
- ◆ Punjabi Rasoi
- ◆ Pappaji's Kitchen
- ◆ Ramada
- ◆ Sayaji
- ◆ Sentosa Water Resort
- ◆ Tip Top International Hotel
- ◆ VITS/Orchid

BANKS & ATM

- ◆ Axis Bank
- ◆ HDFC Bank
- ◆ IDBI Bank
- ◆ State Bank of India
- ◆ Saraswat Co-op. Bank

BUS STOP & RAILWAY STATION

- ◆ Akurdi Railway Station
- ◆ Koyte Wasti Bus Stop
- ◆ Kiwale Bus Stop



- KEY DISTANCES**
- ◆ Wakad Phata - 5 km, approx
 - ◆ Bhumkar Chowk - 3.5 km, approx
 - ◆ Wakad Bus Stand - 3 km, approx
 - ◆ Akurdi Railway Station - 4 km, approx
 - ◆ Express way - 3 km, approx
 - ◆ Pune Railway Station - 22 km, approx



RERA NO.: P52100020135



Pethkar Projects, 'SIYONA', S.NO. 47,48 & 50, Punawale, On Mumbai - Bengaluru Highway, Near Bharat Petrol Pump, PCMC - 411033, Pune, Maharashtra, India.
9764995555 | mail@pethkarprojects.com
www.pethkarprojects.com | www.pethkarsiyona.in

The contents of this brochure are purely conceptual and the images are artists impression and have no legal binding on the developer. The developer reserves the right to amend the same without prior notice.



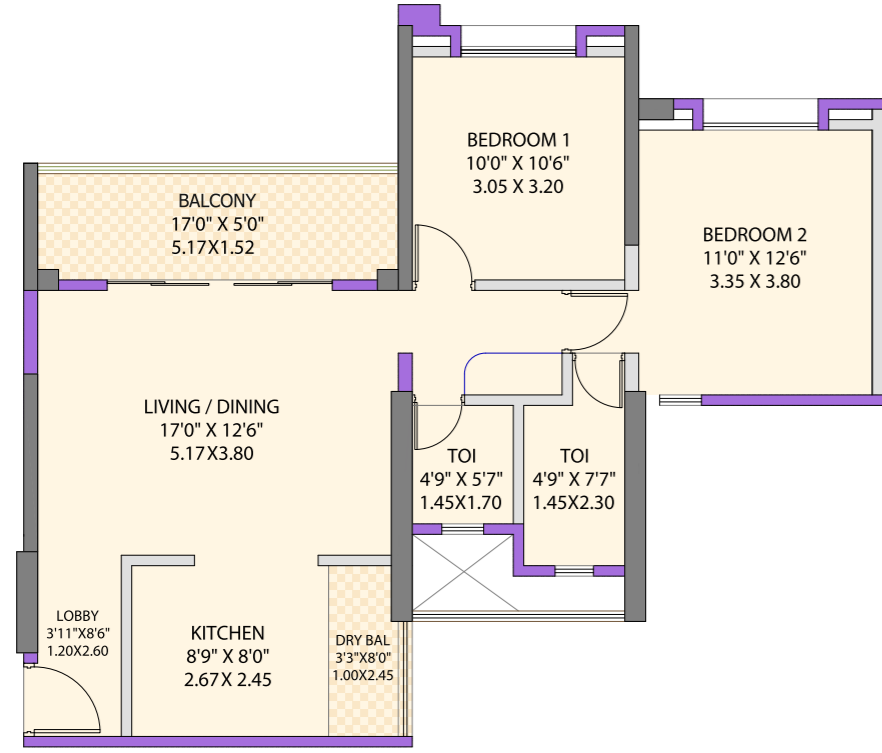
2 & 3 BHK EXOTIC HOMES
PUNAWALE
PHASE - II

A Perfect Home
at a Perfect Place



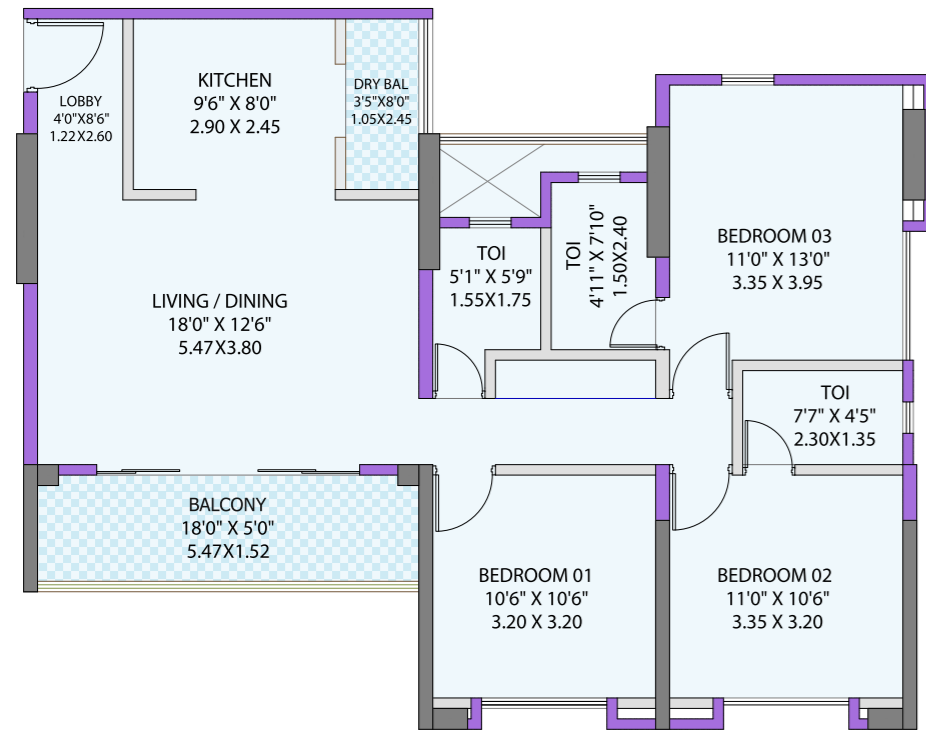
RERA NO.: P52100020135

2 BHK Floor Plan
(Areas 837 Sqft Carpet)
(Areas 77.79 Sq.mtr Carpet)



All Dimensions are from Unfinished to Unfinished

3 BHK Floor Plan
(Areas 1065 Sqft Carpet)
(Areas 98.97 Sq.mtr Carpet)



All Dimensions are from Unfinished to Unfinished

WING - E1 & E2 (BUILDING 'E')

Amenity Facing

